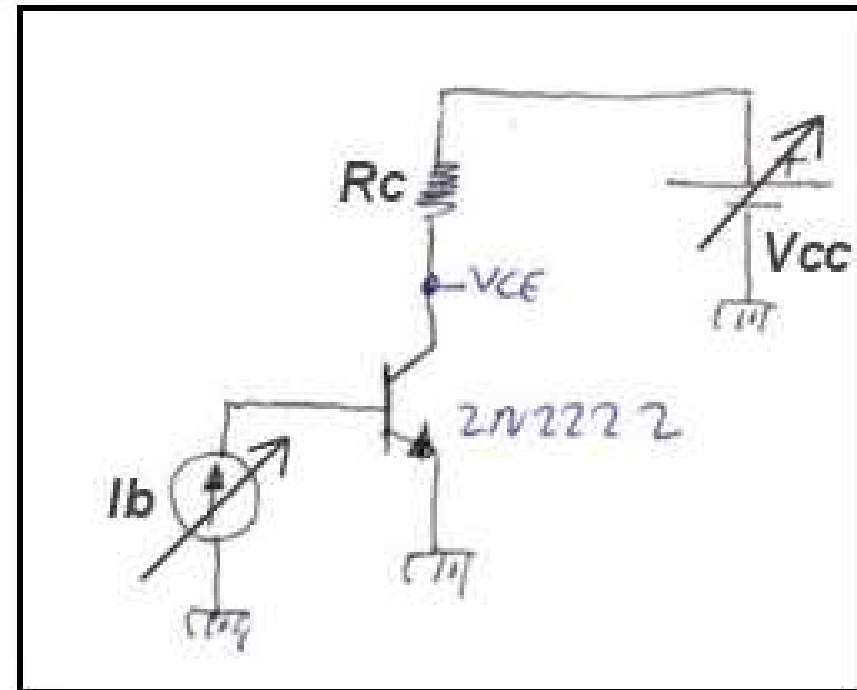
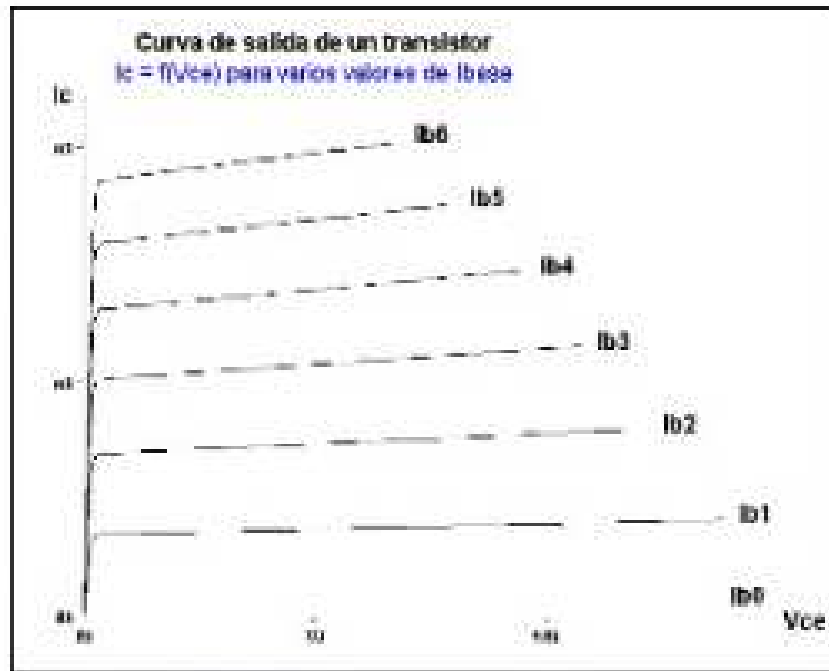


EJERCICIO DE APLICACIÓN

Obtener las curvas características de salida del transistor 2N2222 mediante simulación.

By Tino Fernández

3) Circuito a realizar



$V_{ce0} = 30V$
 $I_c = 0.8A$
 $Pot = 0.5W$

$$V_{cc} = V_{ce0}; V_{cc} = 30V$$

$$I_{c \max} = \frac{V_{cc}}{R_c}; R_c = \frac{V_{cc}}{I_{c \max}} = \frac{30}{0.8} = 37.5\Omega$$